



CITTÀ DI CAVE

Città Metropolitana di Roma Capitale

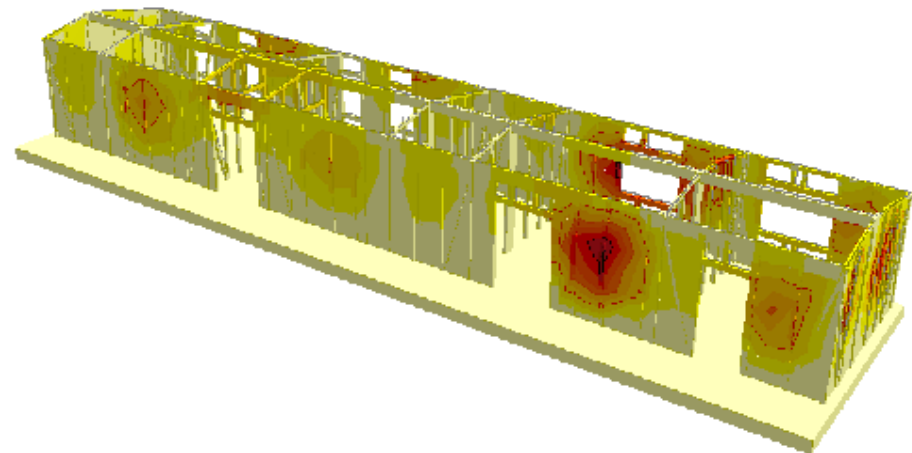
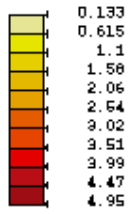
BANDO PUBBLICO PROMOSSO DAL G.A.L. "TERRE DI PRE.GIO." OPERAZIONE 19.2.1-7.5.1

**"INVESTIMENTI PER USO PUBBLICO IN INFRASTRUTTURE RICREATIVE,
INFORMAZIONE TURISTICA E INFRASTRUTTURE TURISTICHE SU PICCOLA SCALA"**

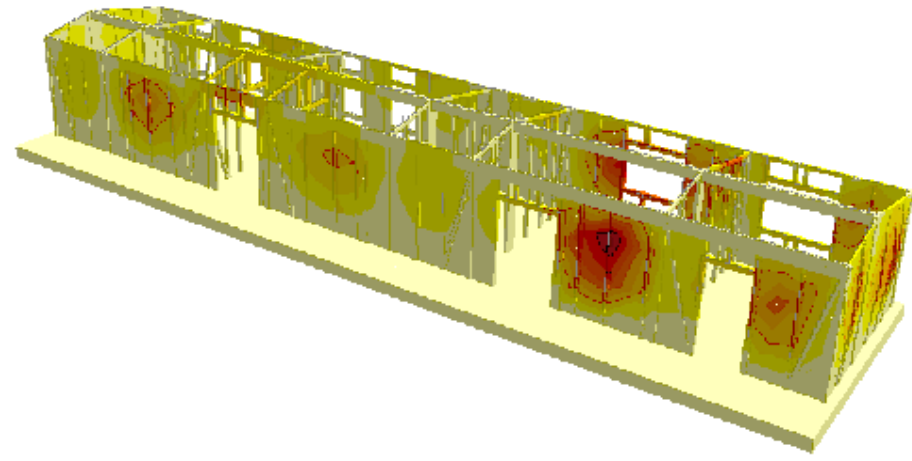
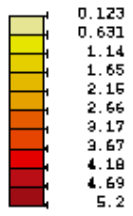
PROGETTO DI RIQUALIFICAZIONE DI AREE VERDI ATTREZZATE PER L' ATTIVAZIONE DI PUNTI INFORMATIVI-FORMATIVI SUL PATRIMONIO ARCHEOLOGICO E PAESAGGISTICO COMUNALE E DI PICCOLI IMPIANTI LUDICO-SPORTIVI DI FRUIZIONE PUBBLICA

PROGETTO ESECUTIVO FABBRICATO PER SERVIZI	
Elaborato	Numero
CONFIGURAZIONE DEFORMATE	TAV. 1
Data	
	NOVEMBRE 2019
Il Tecnico Incaricato : Arch. Michela Rossi	
Il RUP. : ing. Paola Bardelloni	
Il Dirigente III DIPARTIMENTO LL.PP. E URBANISTICA : dott. Elio Zimpi	

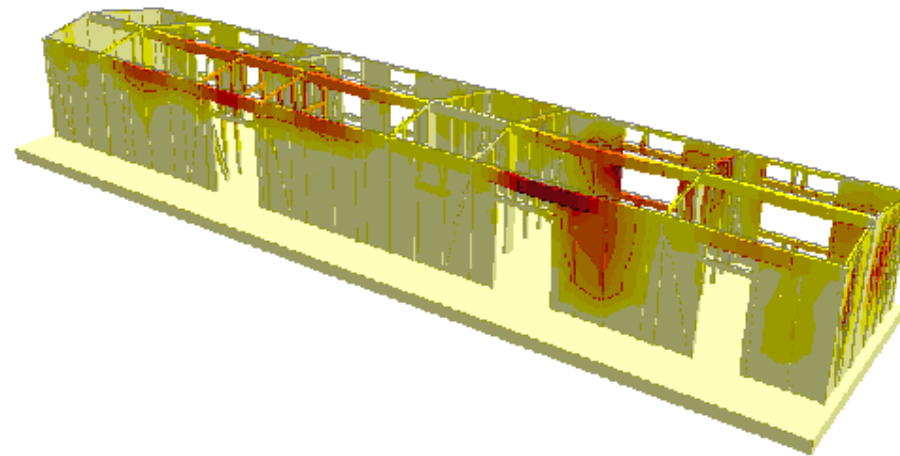
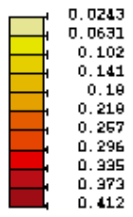
[mm] Deformate - Involuppi SLV - Minimo - A1



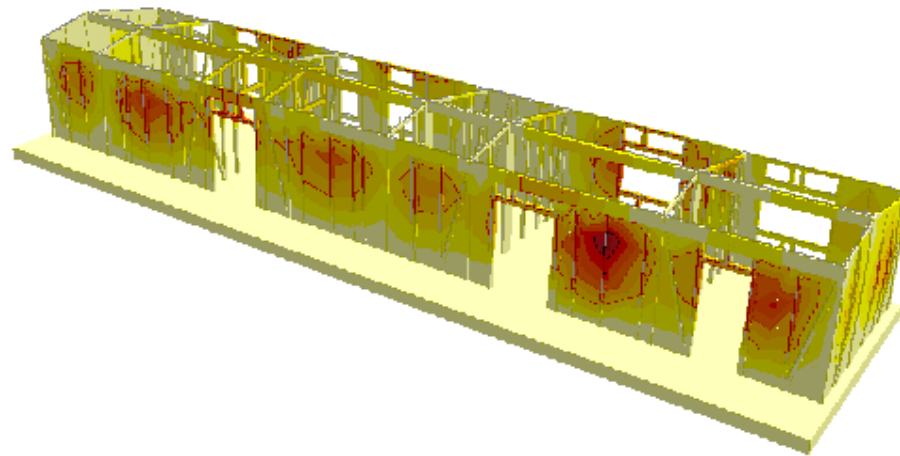
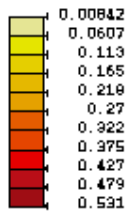
[mm] Deformate - Involuppi SLV - Massimo - A1



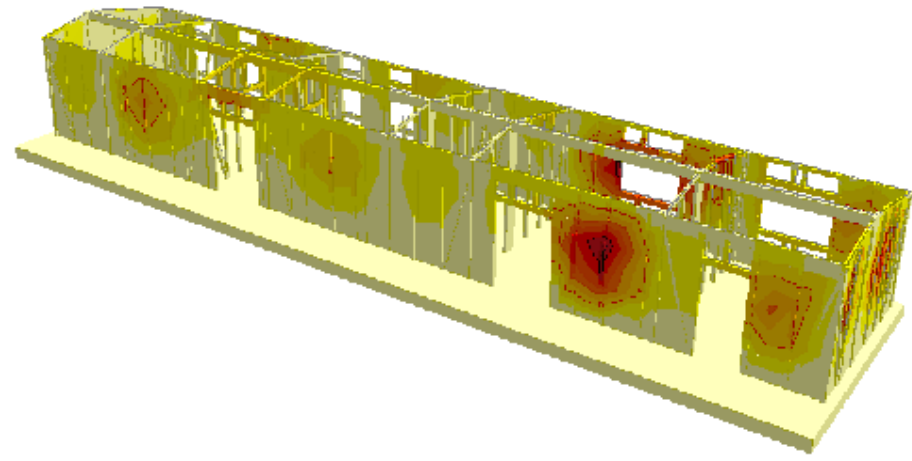
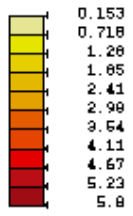
[cm] Deformate - Involuppi SLD - Minimo - A1



[cm] Deformate - Involuppi SLD - Massimo - A1

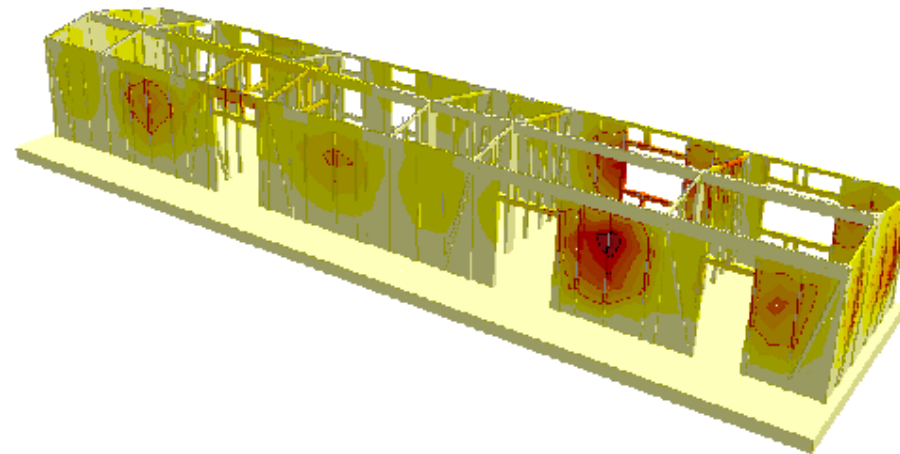
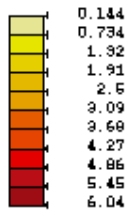


[cm] Deformate - Involuppi SLC - Minimo - A1



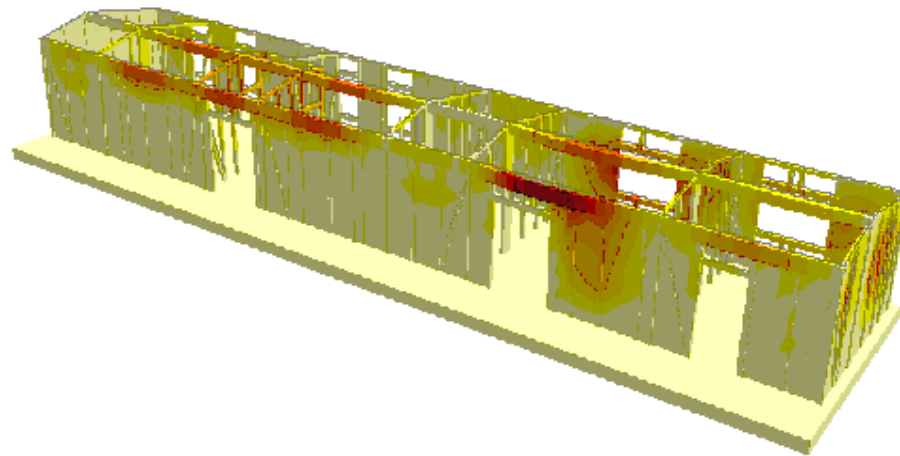
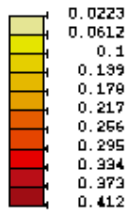
[cm]

Deformate - Involuppi SLC - Massimo - A1



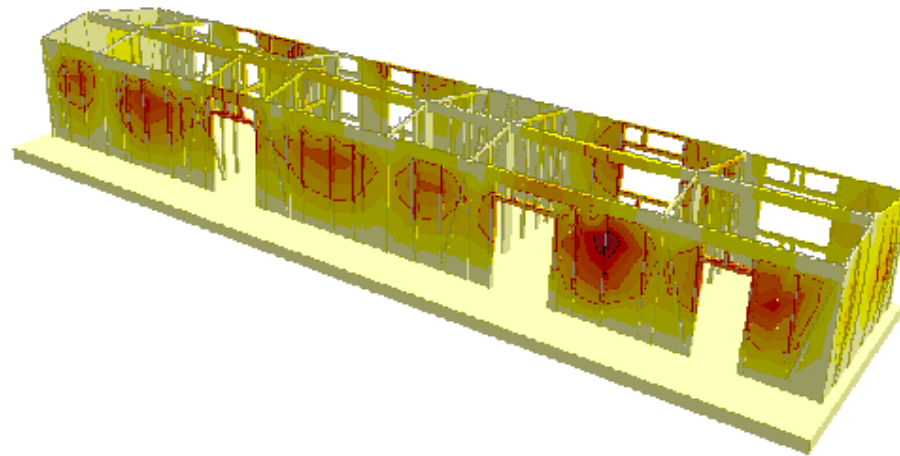
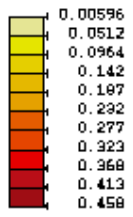
[cm]

Deformate - Involuppi SLO - Minimo - A1



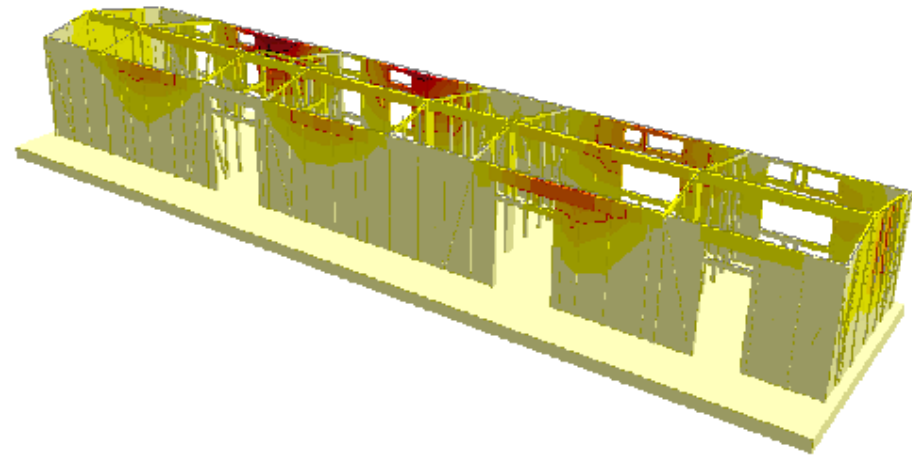
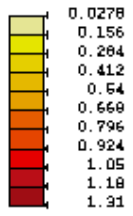
[mm]

Deformate - Involuppi SLO - Massimo - A1



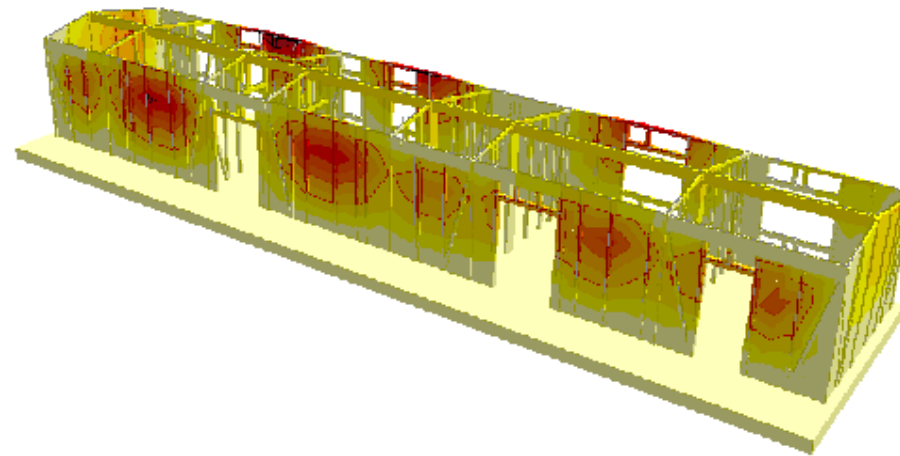
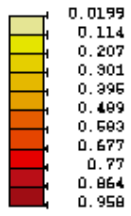
[mm]

Deformate - Involupi Caratteristiche - Minimo - A1



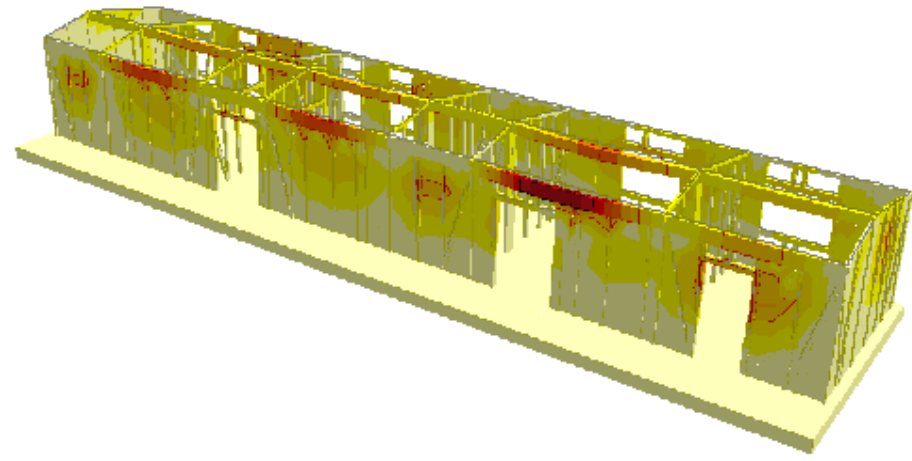
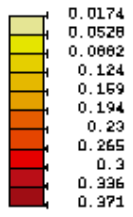
[mm]

Deformate - Involuppi Caratteristiche - Massimo - A1



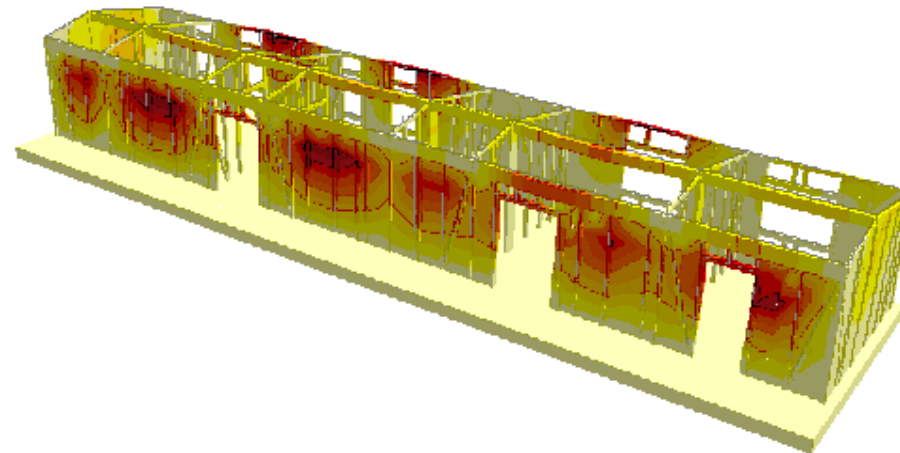
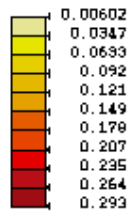
[mm]

Deformate - Involuppi SLE frequenti - Massimo - A1



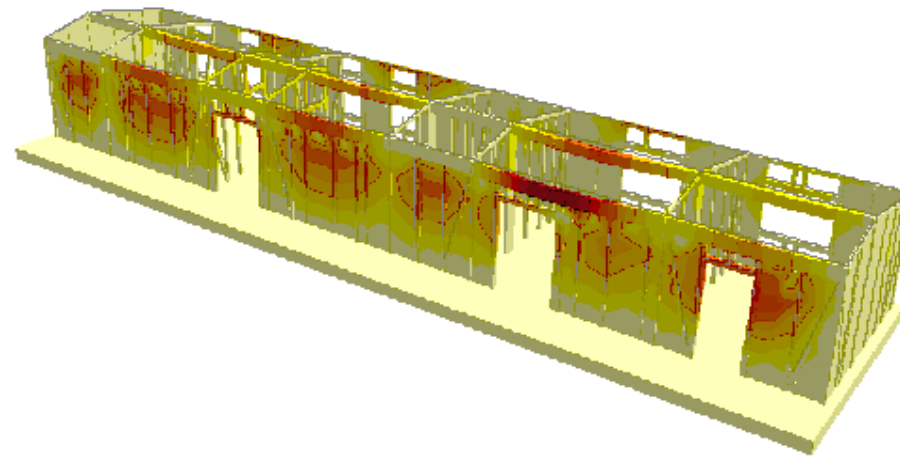
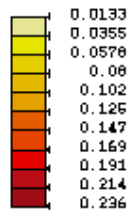
[mm]

Deformate - Involuppi SLE frequenti - Massimo - A1



[mm]

Deformate - Involuppi SLE quasi perm. - Minimo - Al



[cm]

Deformate - Involuppi SLE quasi perm. - Massimo - A1

