

Committente: **Comune di Subiaco**  
 Piazza S. Andrea, 1 - 00028 Subiaco (RM)  
 tel. 0774 81611 - fax 0774 822370  
 sito web: www.comune.subiaco.rm.it  
 e-mail: info@comunesubiaco.com



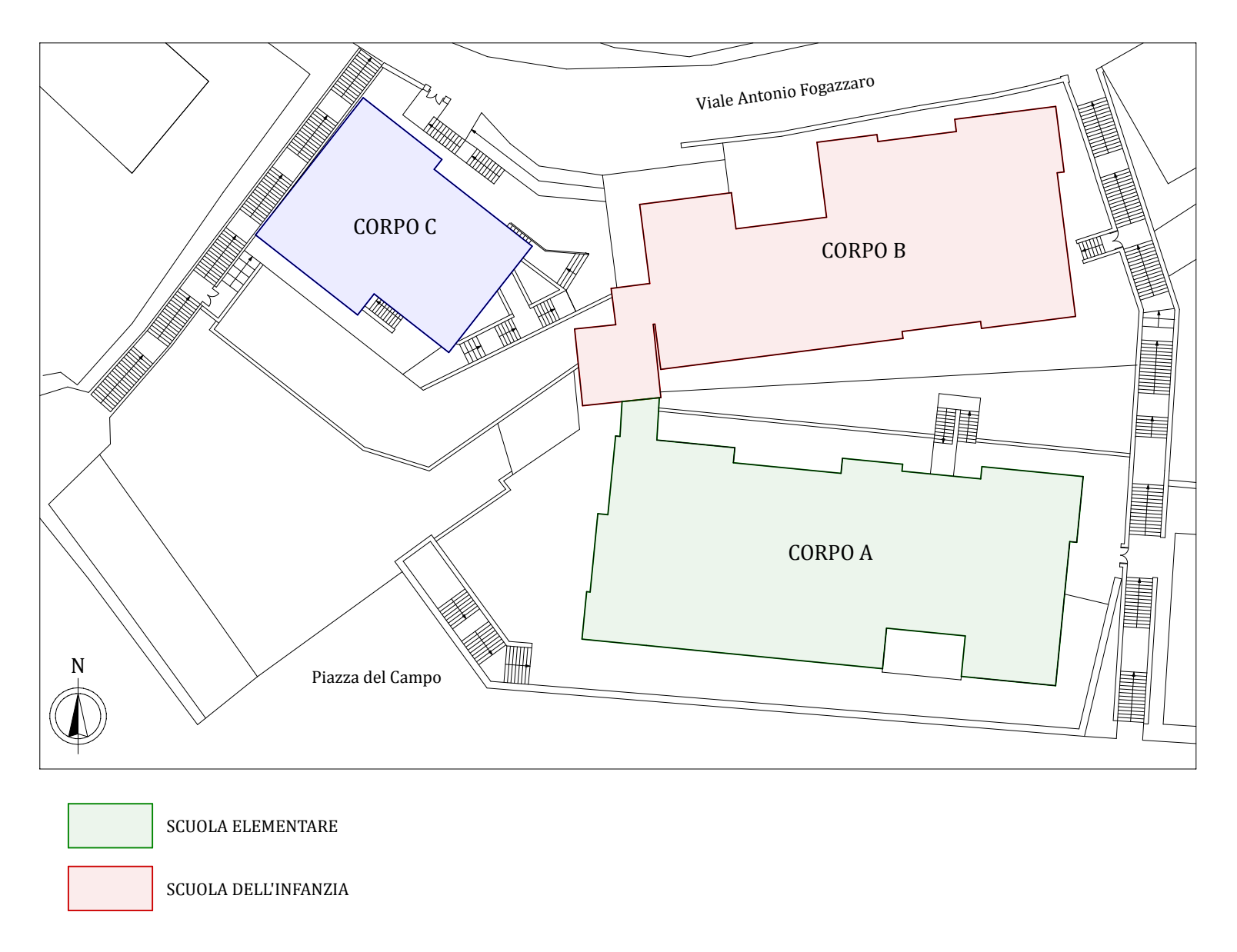
Città metropolitana di Roma Capitale

Oggetto lavori: ADEGUAMENTO STATICO SISMICO, ENERGETICO E FUNZIONALE PLESSO SCOLASTICO VIA FOGAZZARO, PIAZZA ROMA

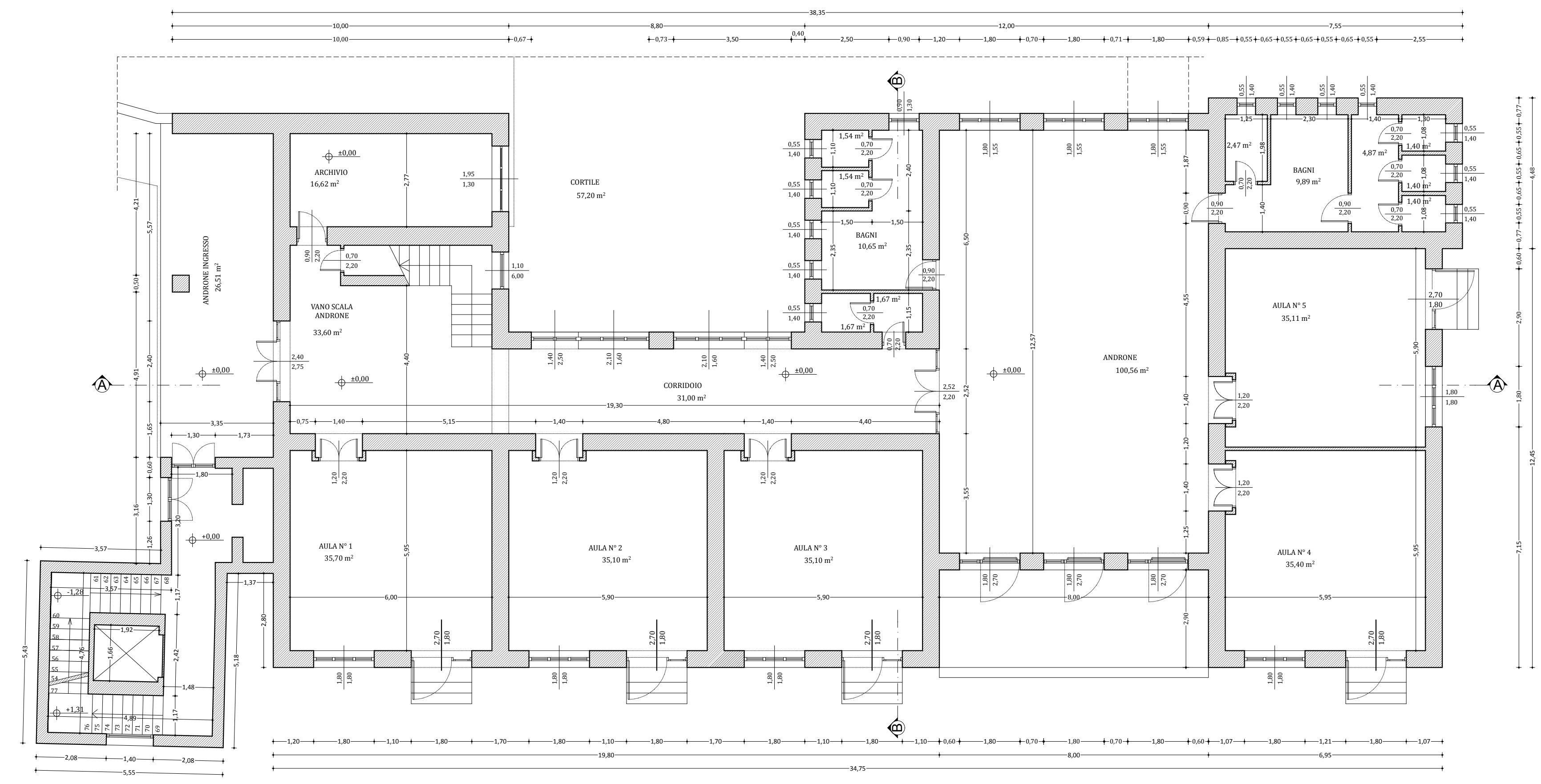


Planimetria generale, piante, prospetti e sezioni_Corpo B	DATA
	Settembre 2020
PROGETTO DEFINITIVO	AGG. 1
	SCALA Varie
Progettista: Arch. Daniele Cardoli	ELABORATO
Supporto: Ing. Vincenzo Pitta	<b>4.1</b>

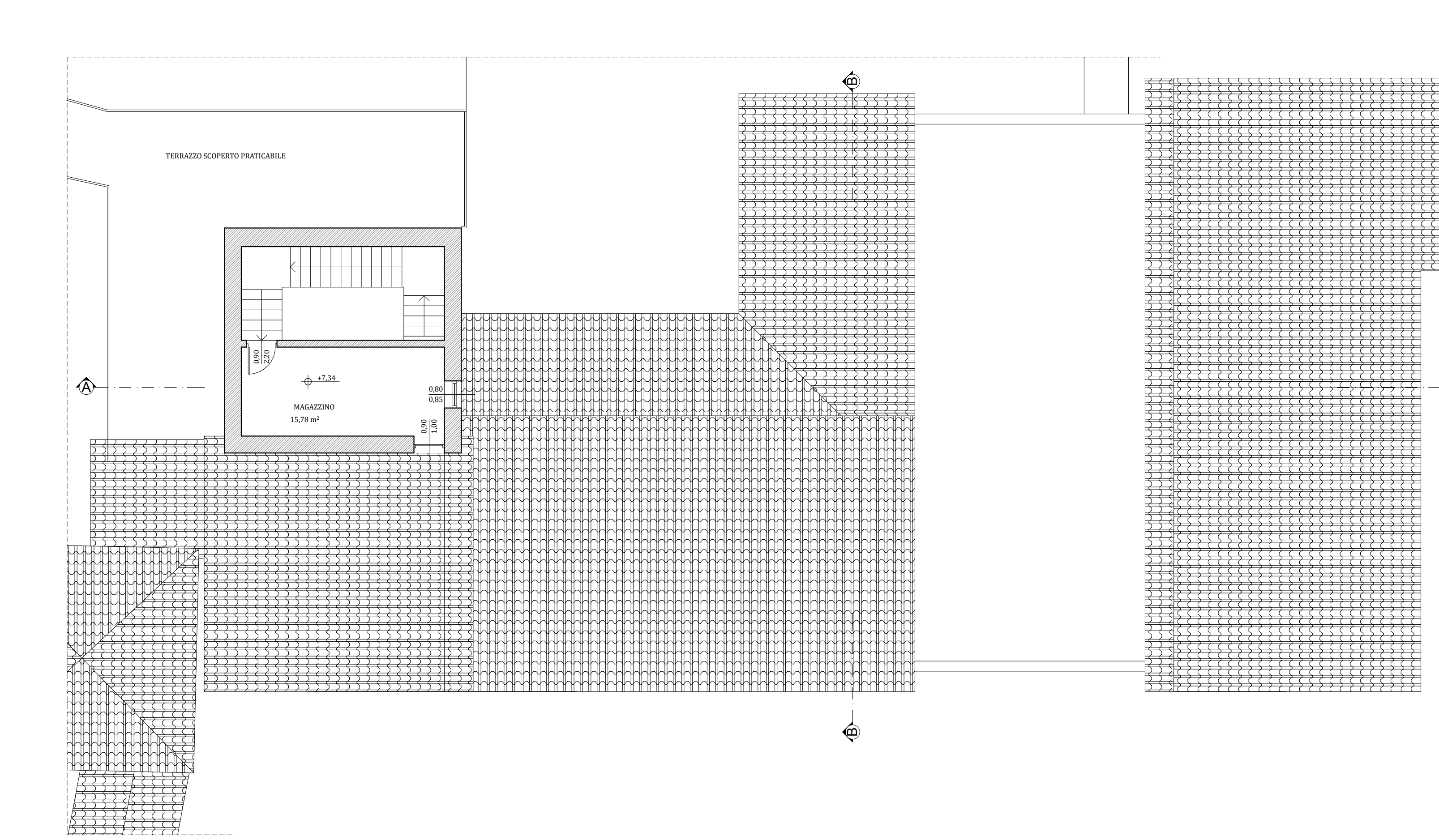
PLANIMETRIA GENERALE scala 1:500



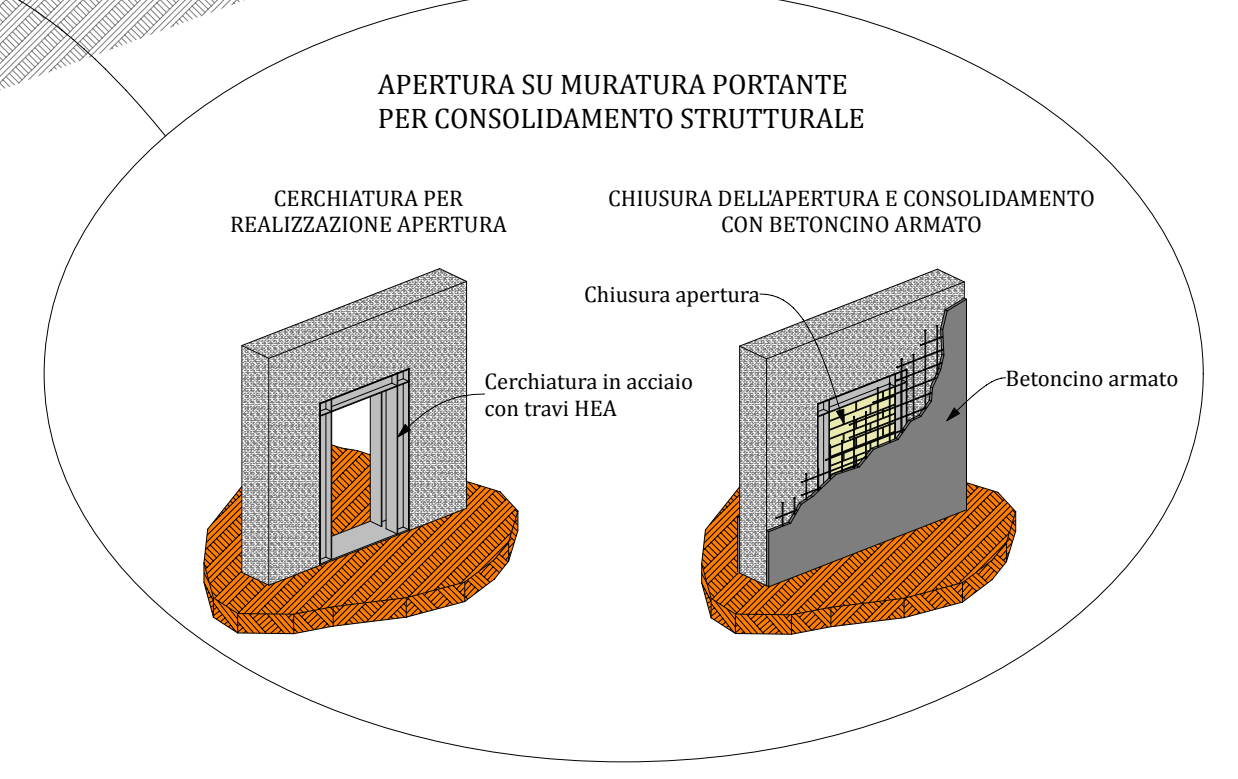
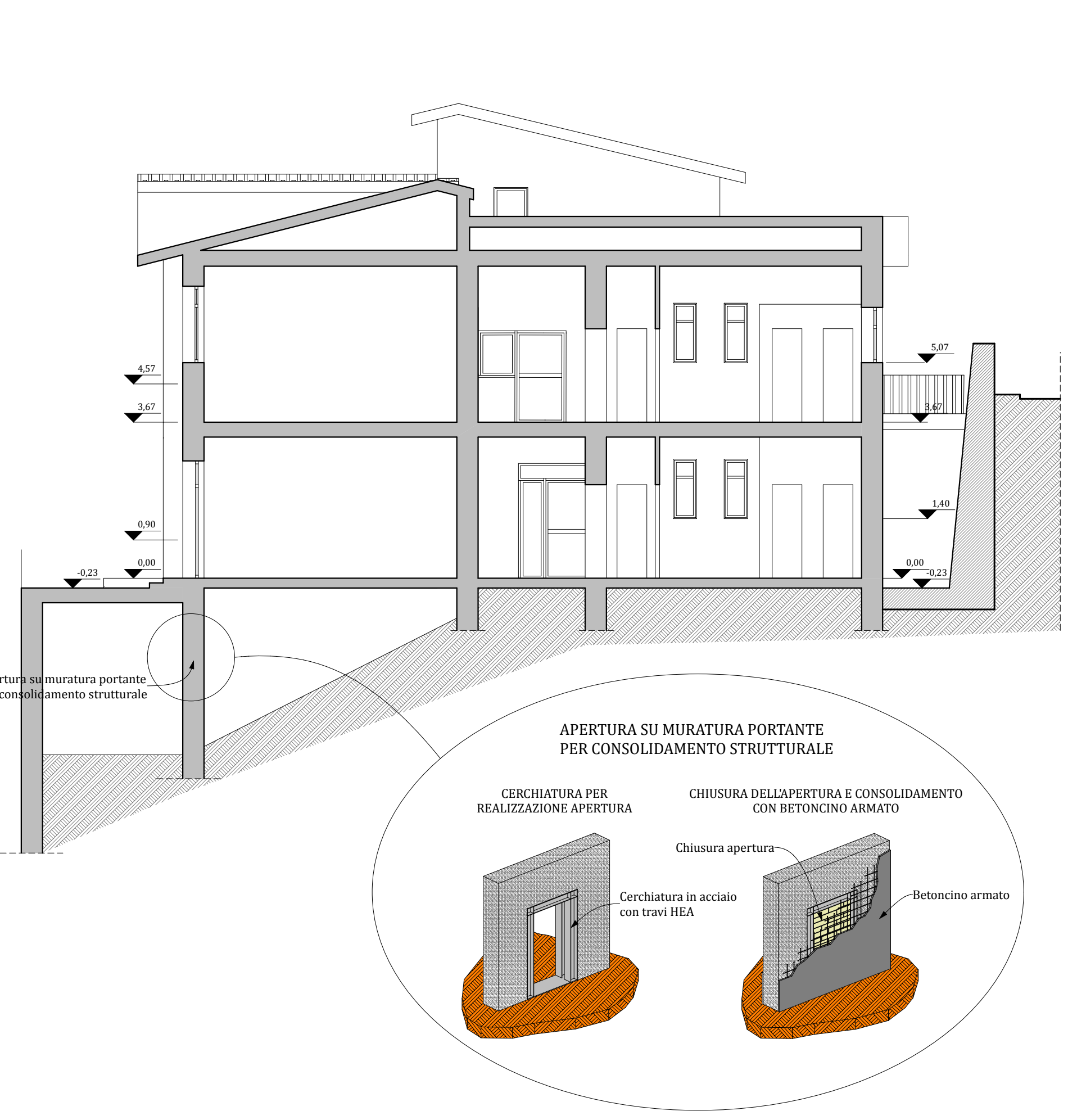
PIANTA PIANO TERRA scala 1:100



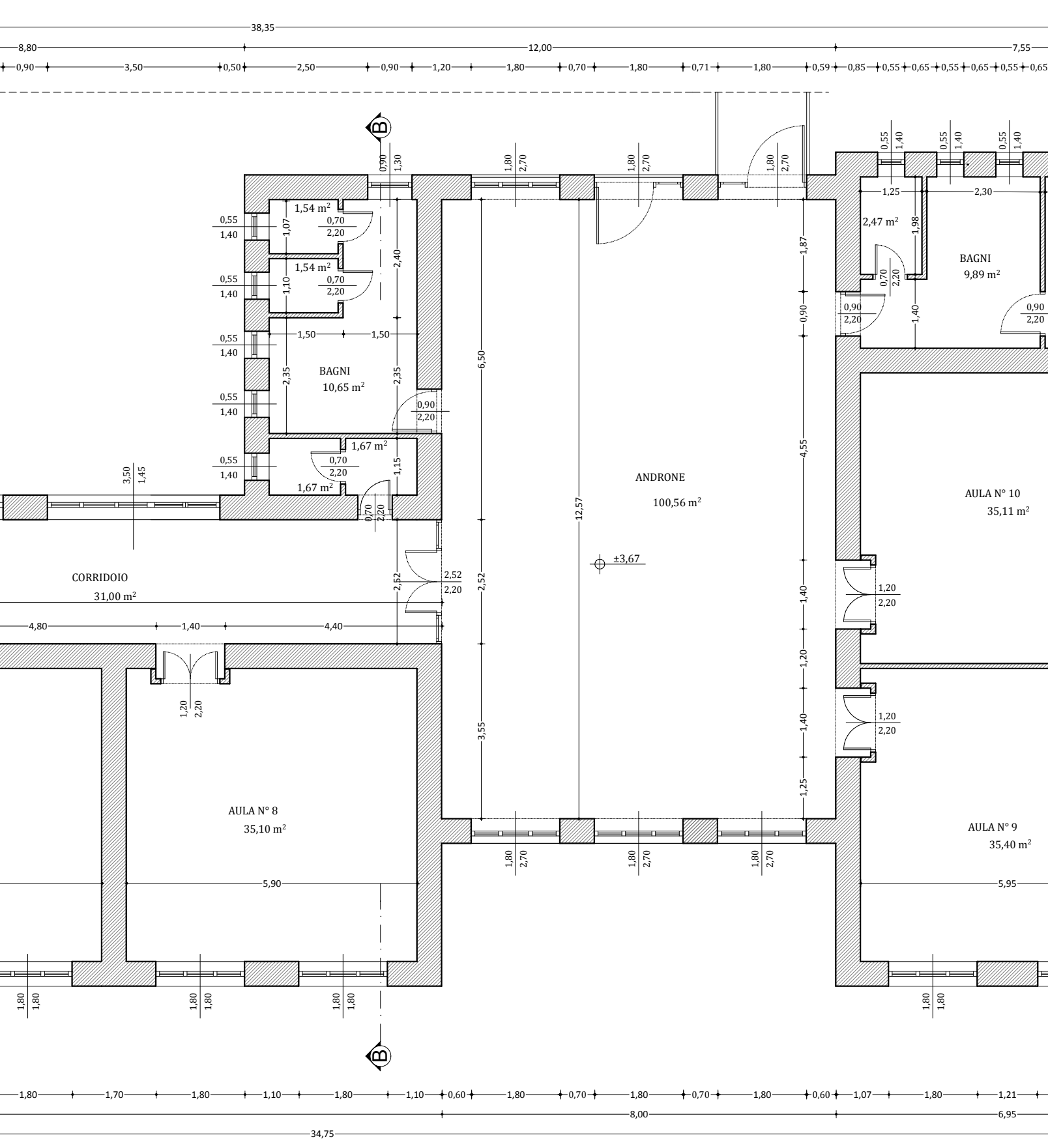
PIANTA COPERTURA scala 1:100



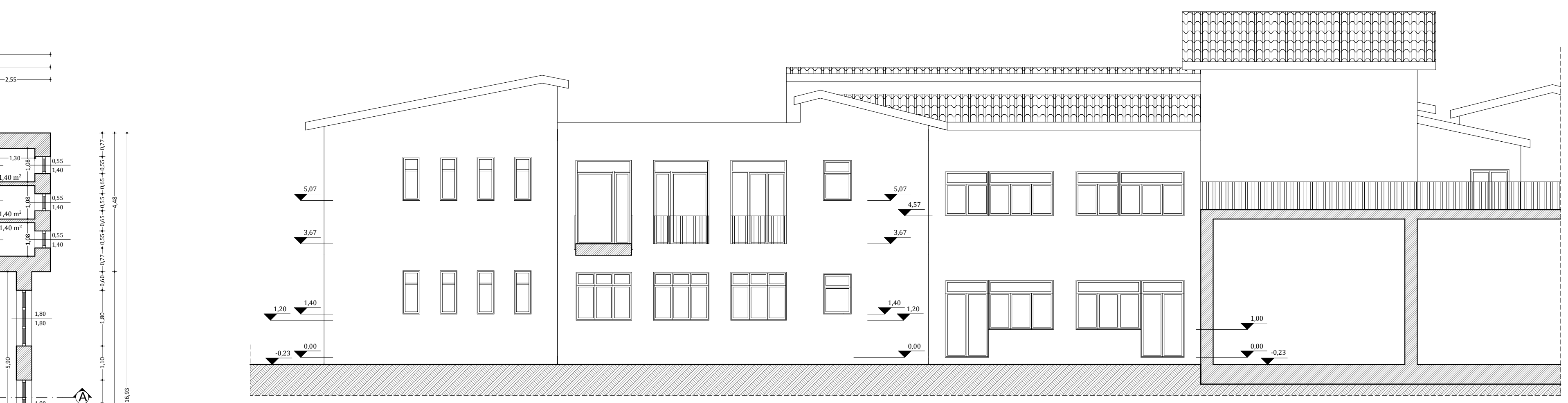
SEZIONE B-B scala 1:100



PIANTA PIANO PRIMO scala 1:100



PROSPETTO NORD scala 1:100



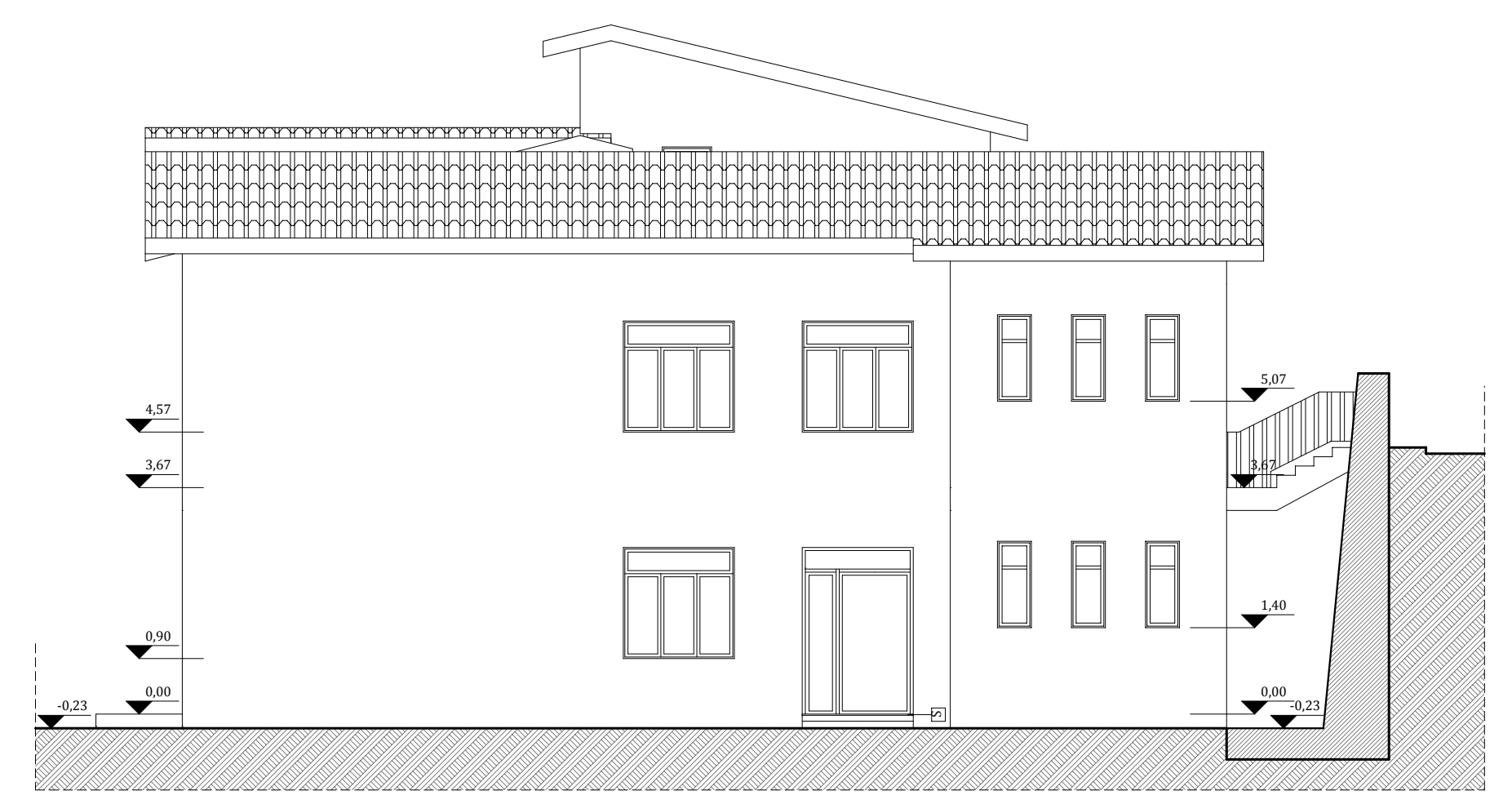
PROSPETTO OVEST scala 1:100



PROSPETTO SUD scala 1:100



PROSPETTO EST scala 1:100



SEZIONE A-A scala 1:100

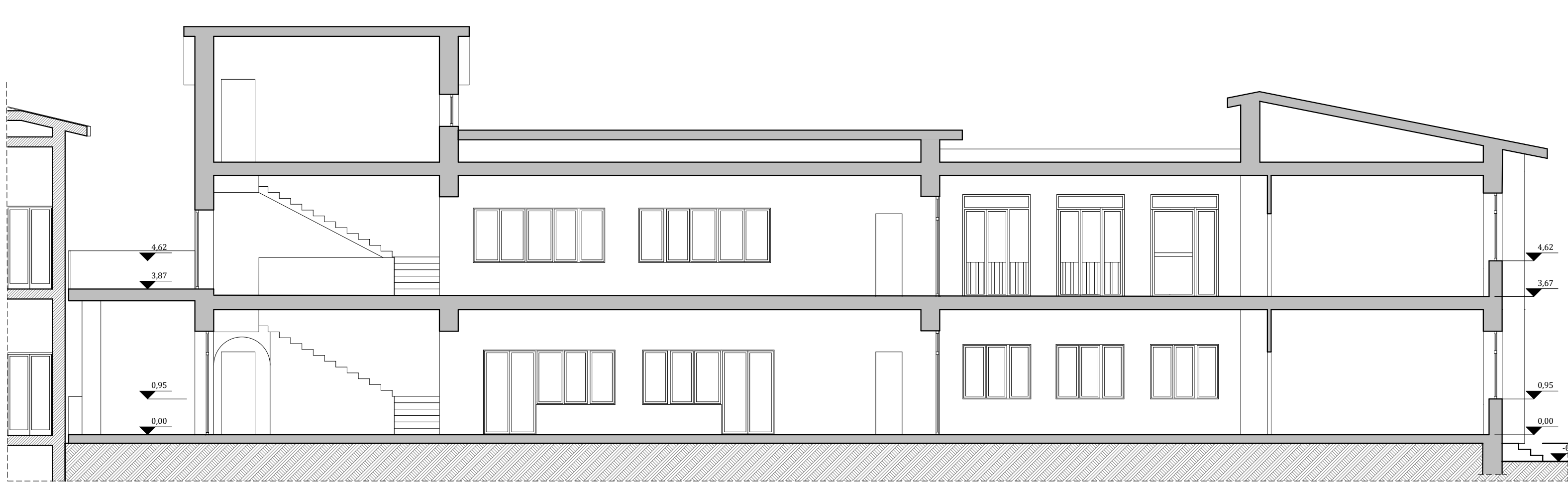


FOTO CORPO A

