

PROGETTO ESECUTIVO

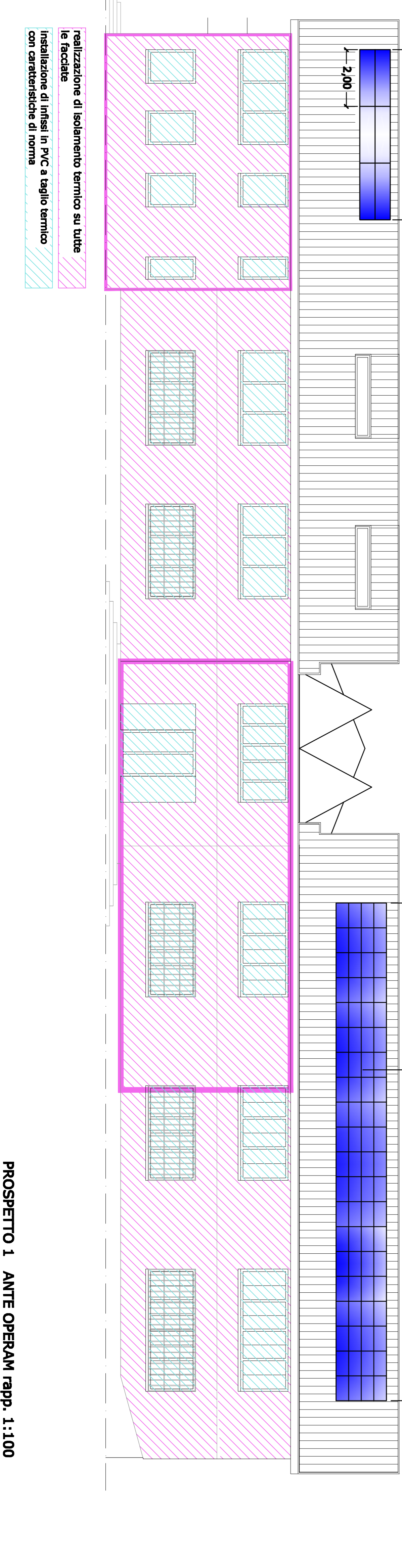
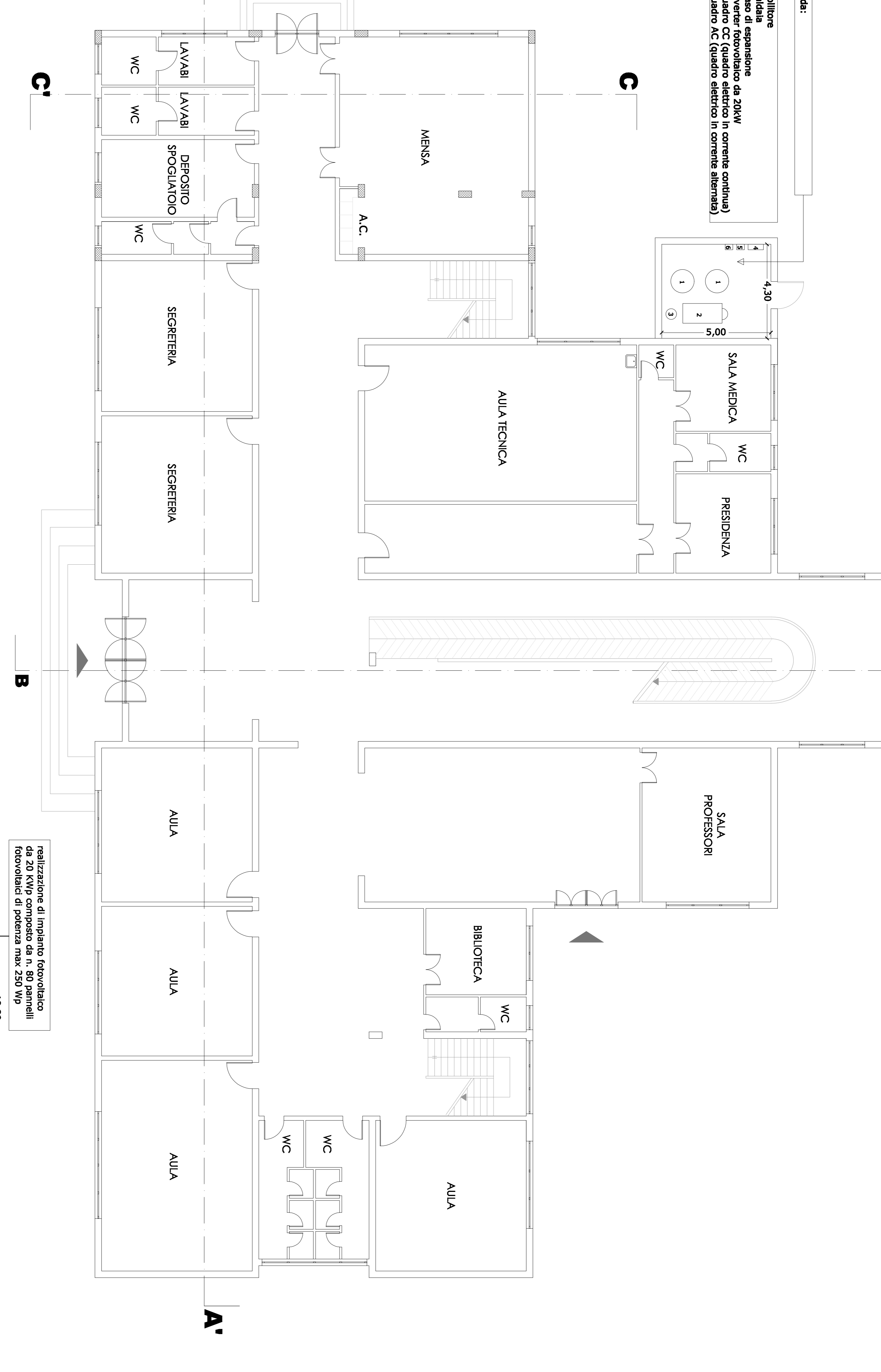
ELABORATO GRAFICO
 Post operam
 TAV. rev. 018

DITTA: COMUNE DI VALMONTONE

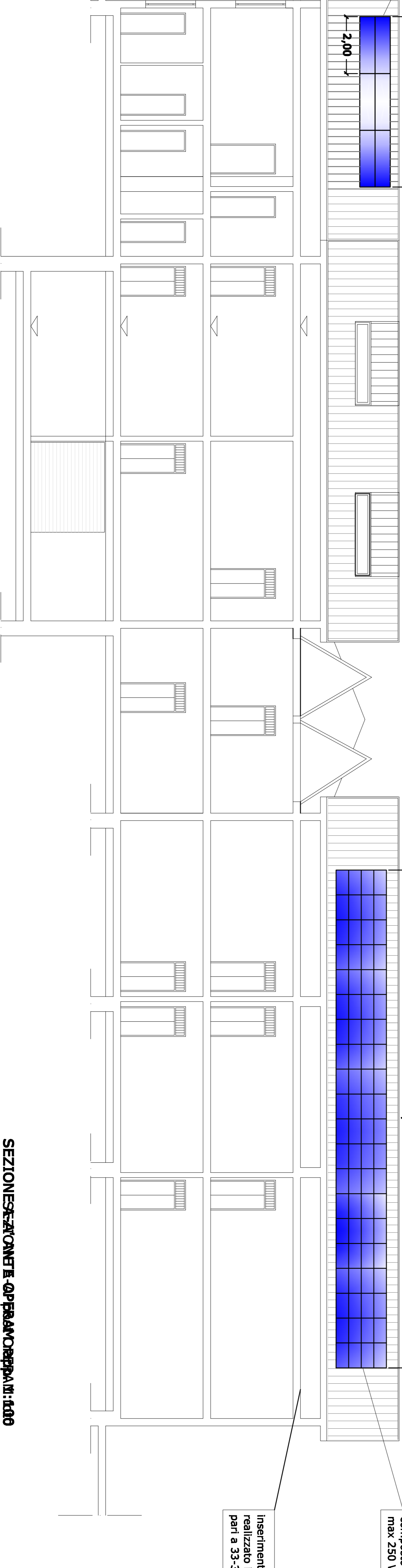
IL PROGETTO È
 REDATTO DALL'ING.
 DOTT. ING. STEFANO POLSINELLI
 WWW.STEFAPOLSINELLI.IT

VISIO DELL'ENTE

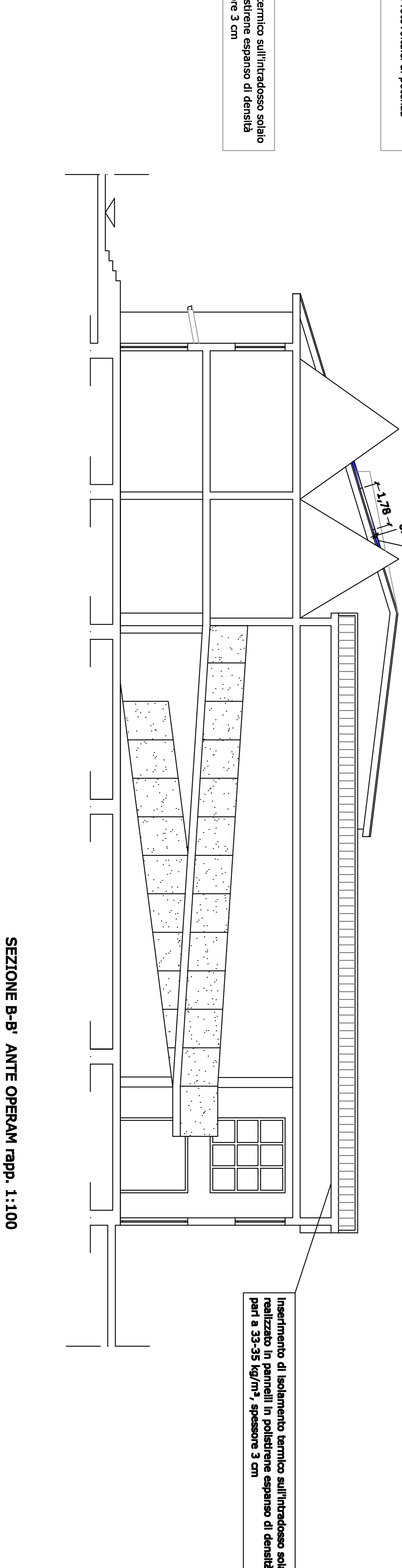
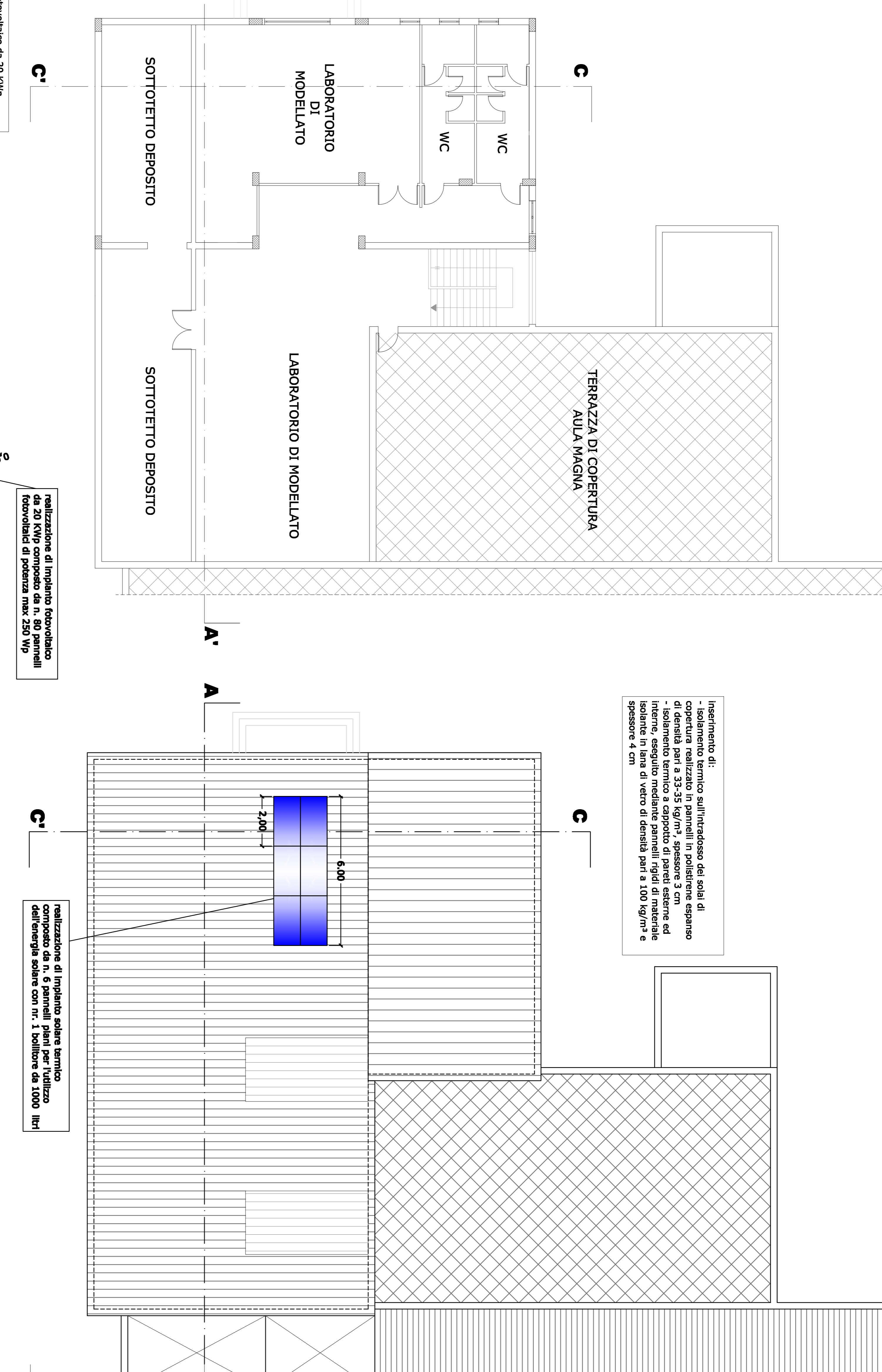
PIANTA PIANO TERZA POST OPERAM rapp. 1:100



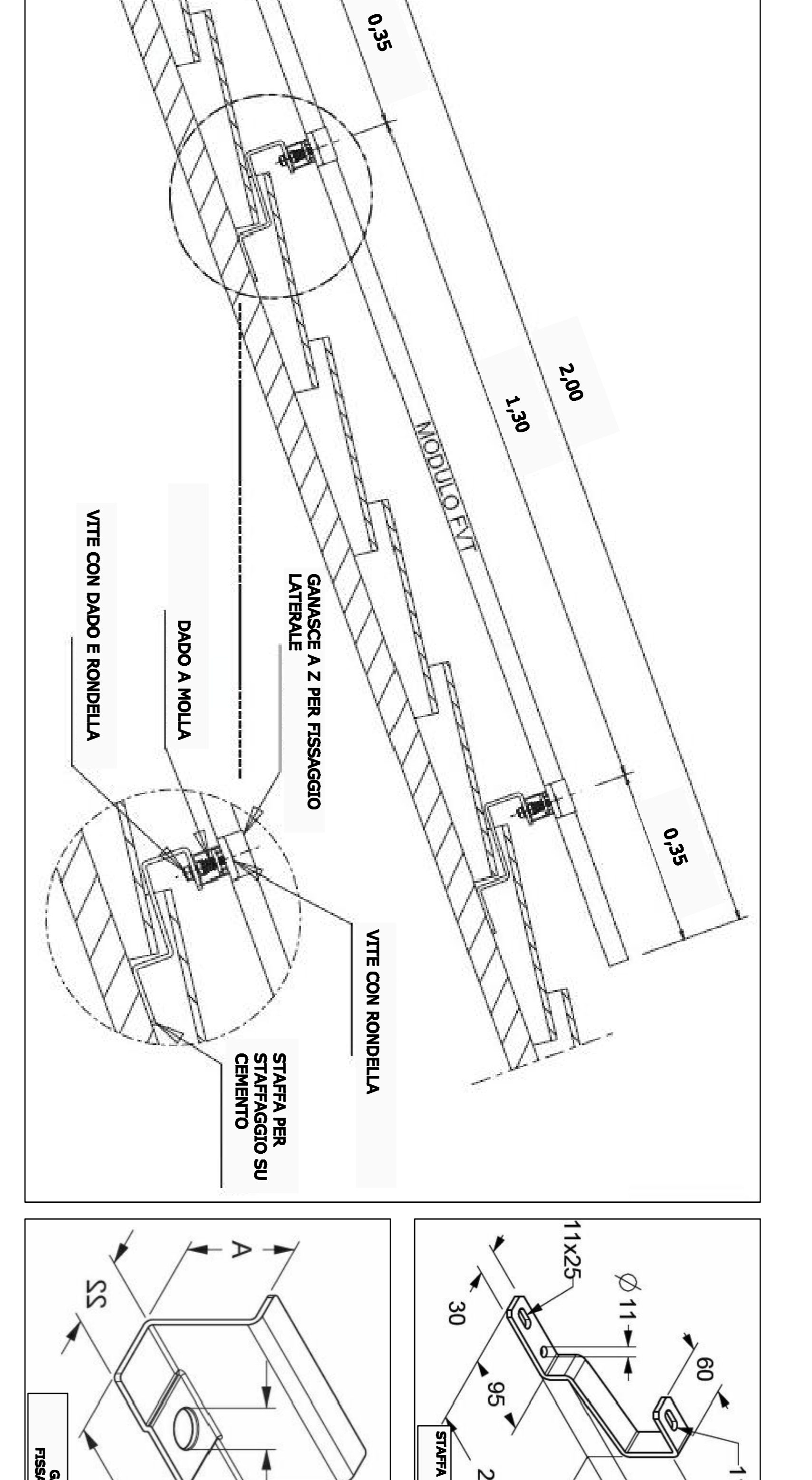
PIANTA PIANO PRIMO POST OPERAM rapp. 1:100



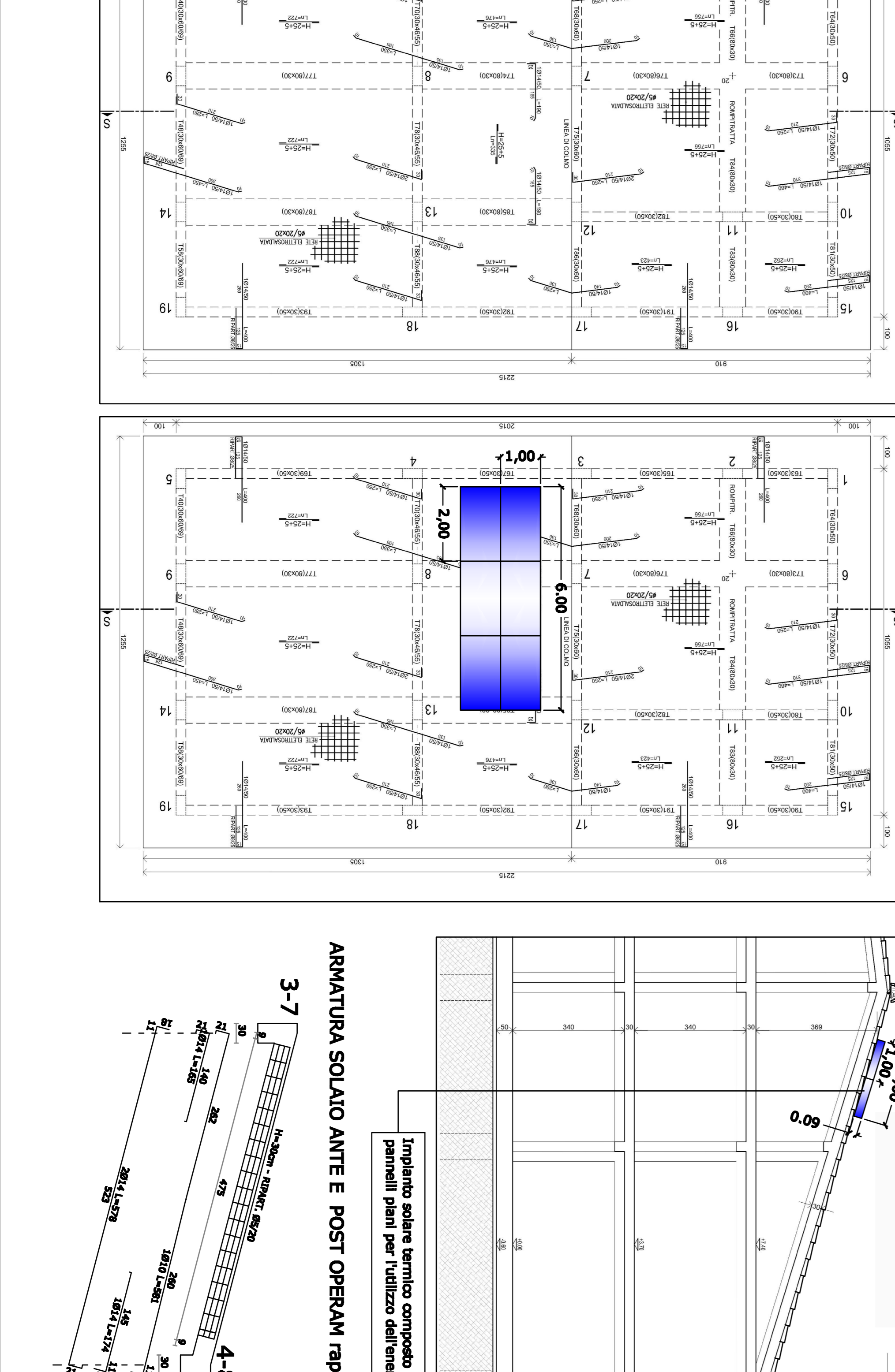
PIANTA PIANO COPERTURA POST OPERAM rapp. 1:100



PARTICOLARI FISSAGGIO PANNELLO SU COPERTURA



PIANTA CARPENTERIA SOLAIO DI COPERTURA INTERESSATA DAL SOLAIO TECNICO rapp. 1:100



PIANTA SOLAIO ANTE E POST OPERAM rapp. 1:50

